

De-Orllewin Cymru | South-West Wales



Cyrsiau Cymraeg i Oedolion Welsh for Adults Courses

2009/10





Croeso

Croeso i raglen 2009/2010 Canolfan Cymraeg i Oedolion De-Orllewin Cymru. Y Ganolfan, sy'n rhan o Adran Addysg Barhaus Oedolion Prifysgol Abertawe, sy'n gyfrifol am y gwasanaeth dysgu Cymraeg i oedolion yn siroedd Castell-nedd Port Talbot, Abertawe, Sir Gâr a Sir Benfro. Rydyn ni'n darparu cyrsiau ein hunain ac yn gweithio gyda nifer o bartneriaid yn y siroedd hyn er mwyn cynnig rhaglen gynhwysfawr o gyrsiau ar draws y rhanbarth. Mae cyrsiau ar bob lefel – i rai sydd am wella'u Cymraeg yn ogystal ag i bobl sydd am ddechrau dysgu'r iaith. Mae manylion yr holl gyrsiau ar gael yn yr un rhaglen hon ac mae un pwynt canolog ble gallwch chi droi am wybodaeth, cyngor ac arweiniad am yr holl gyfleoedd dysgu Cymraeg yn y De-Orllewin.

Defnyddiwch y rhaglen hon i ddewis y cwrs gorau i chi. Gorau po fwyaf o oriau y gallwch chi eu rhoi i'r dysgu os ydych chi eisiau dod i siarad Cymraeg yn rhugl. Mae cyrsiau ar gael sy'n cwrdd am 10 awr, 4 awr neu 2 awr yr wythnos ac ar adegau gwahanol yn ystod y dydd. Edrychwch ar y canllaw i'r lefelau gwahanol ar dudalen 8 cyn chwilio trwy'r cyrsiau sydd wedi'u rhestru ar gyfer eich ardal chi a gobeithio y dewch chi o hyd i'r cwrs iawn yn y man iawn ar yr amser iawn. Ac os oes angen unrhyw gyngor neu esboniad pellach, cofiwch gysylltu â ni.

Canolfannau Cymraeg i Oedolion – Rhannwch eich Cymraeg!



01792 602070



cymraegioedolion@abertawe.ac.uk



www.dysgucymraegdeorllewin.org

Welcome

Welcome to the South-West Wales Welsh for Adults Centre's 2009/2010 brochure. The Centre, which is part of the Department of Adult Continuing Education at Swansea University caters for adult Welsh learners in the counties of Neath Port Talbot, Swansea, Carmarthenshire and Pembrokeshire. We provide courses directly and through working in partnership with a number of organisations in these counties, to offer a comprehensive programme of courses across the region. There are courses at all levels catering for people who want to start learning Welsh as well as those who wish to improve their Welsh or make further progress in their learning. Details of all the courses are available in this single brochure and there is a central contact point for information, advice and guidance on all the opportunities to learn Welsh in South-West Wales.

Use this brochure to help you choose a course which best suits your needs. The more hours you can commit to learning, the better your progress towards fluency. We offer courses that meet for 10 hours, 4 hours or 2 hours weekly and at different times of day. Take a look at the guide to the different levels on page 8, then browse through the courses listed for your area. Hopefully, you will find the right course in the right place at the right time. And if you need any further advice or explanation, please contact us.

Welsh for Adults Centres – We'll bring out the Cymraeg in you!



01792 602070



welshforadults@swansea.ac.uk



www.learnwelshsouthwestwales.org



Croeso i Gymru

Mae llawer o bobl o gefndiroedd amrywiol yn symud i Gymru ac yn sylwi bod yr iaith Gymraeg yn un o nodweddion mwyaf diddorol eu cartref newydd. Rydyn ni'n cynnig cyrsiau Cyflwyniad i'r Gymraeg ac yn ceisio cyfrannu tuag at adeiladu pontydd rhwng poblogaethau mudol a'r gymuned Gymraeg.

Rwy'n Siarad Cymraeg OND...

Mae llawer o bobl sy'n gallu siarad Cymraeg yn chwilio am help i wella'u sgiliau iaith. Fallai eich bod chi eisiau gwella'ch Cymraeg er mwyn gallu defnyddio'r iaith yn y gwaith neu i'ch helpu chi i gael swydd newydd. Neu ydych chi eisiau bod yn fwy hyderus wrth gynnig cefnogaeth i'ch plant gyda'u gwaith ysgol? Mae nifer o gyrsiau yn y llyfryn hwn ar lefel "Hyfedredd" i helpu pobl sydd eisiau "gloywi iaith", beth bynnag fo'r rheswm. Neu cysylltwch â ni os ydych chi eisiau trefnu cwrs fel hyn ar gyfer eich grŵp chi.

Cymraeg i'r Teulu

Wrth i fwy a mwy o blant brofi manteision addysg ddwyieithog a dysgu'r Gymraeg yn yr ysgol, mae llawer o rieni ac aelodau eraill o'r teulu am ymuno yn yr hwyl. Mae llawer o'n cyrsiau ar amseroedd ac mewn lleoliadau sy'n gyfleus i rieni ac mae gyda ni gyrsiau arbennig hefyd i helpu pobl i ddysgu Cymraeg i'w defnyddio gyda'r plant. Os oes diddordeb gyda chi mewn cael y gwasanaeth hwn yn eich cymuned chi, cysylltwch â ni.

Welcome to Wales

For people moving to Wales, seeing and hearing the Welsh language in everyday use side by side with English is one of the most interesting features of their new home. We offer introductory courses to the language aimed specifically at newcomers to Wales and work with migrant population groups with the aim of enhancing the welcome experienced.

I Can Speak Welsh BUT...

Many Welsh-speakers are now getting help to improve their language skills. Perhaps you want to improve your Welsh language skills for use at work or to help you gain new employment. Or maybe you would like to be more confident in supporting your children with school work. There are a number of courses listed in this brochure at "Proficiency" level for those who wish to improve their Welsh language skills, whatever the reason. Please contact us if you would like to arrange such provision for your group.

Welsh for the Family

As more and more children get the advantages of a bilingual education and learning Welsh at school, many parents and other family members want to get in on the act. Many of our courses are arranged at times and venues that suit parents and we also offer specific courses enabling you to learn some Welsh that you can use with the children. If you would like us to bring this service to your community, please contact us.

Cymraeg yn y Gweithle

Mae llawer o gwmnïau preifat, a sefydliadau cyhoeddus a gwirfoddol nawr yn deall manteision defnyddio'r Gymraeg yn eu gwaith ac yn awyddus i wella sgiliau eu staff trwy hyfforddiant Cymraeg yn y Gweithle. Mae Canolfan Cymraeg i Oedolion y De-Orllewin yn gallu eich cynghori chi a'ch helpu i gynllunio rhaglen o hyfforddiant sy'n addas i'ch gweithwyr chi. Cysylltwch â'r Ganolfan am gyngor a manylion pellach.

'Rydyn ni wrth ein bodd gyda gwasanaeth y Ganolfan. Rydwn ni'n gallu dylanwadu ar gynnwys y cyrsiau yn ôl ein hanghenion ni ac mae'r cyrsiau'n ein galluogi ni i gynnig gwasanaeth arall i'n cwsmeriaid.'

Judith Roach, Asiantaeth yr Amgylchedd Cymru

'Mae'r cyrsiau a ddarperir i ni gan Ganolfan Cymraeg i Oedolion y De-Orllewin wedi galluogi staff i ddod yn fwy rhugl yn y Gymraeg ac mae'n nhw'n werthfawr iawn yn ein helpu ni i gwrdd ag anghenion busnes mewn ardaloedd dwyieithog.'

Richard Essery, Grŵp Gwalia

Welsh in the Workplace

Many private companies, public and voluntary organisations now see the advantages of communicating bilingually and are looking to increase the skills of their staff through Welsh in the Workplace training. The South-West Wales Welsh for Adults Centre can offer you a comprehensive advice service and help you plan a suitable training programme for your employees. Please contact the Centre for further advice and details.

'We are delighted with the service offered by the Centre. We are able to influence course content as we need it and the courses enable us to provide another service to our customers.'

Judith Roach, Environment Agency Wales

'The courses supplied to us by the South-West Wales Welsh for Adults Centre have allowed staff to increase fluency in Welsh and have been very valuable in helping us to meet business needs in bilingual areas.'

Richard Essery, Grŵp Gwalia



Mynediad Plus – Cwrs Cymraeg Dwys

Os oes amser gyda chi, ac os ydych chi eisiau dysgu siarad Cymraeg yn gyflym a dod yn siaradwr rhugl, dyma'r cwrs i chi. Mae'r cwrs yn cwrdd bedwar bore yr wythnos ac mae'n cael ei gynnis yn Abertawe neu Gaerfyrddin:

Abertawe – Tŷ Tawe, Heol Christina

9:30-12:00 Dydd Llun, Dydd Mawrth, Dydd Mercher, Dydd Iau
Cyfarfod Cyntaf: 14 Medi 2009

Caerfyrddin – Coleg Prifysgol y Drindod

9:30-12:00 Dydd Llun, Dydd Mawrth, Dydd Mercher, Dydd Iau
Cyfarfod Cyntaf: 14 Medi 2009

Cysylltwch â ni i gael sgwrs a manylion pellach am y cyrsiau hyn:

☎ 01792 602070
✉ cymraegioedolion@abertawe.ac.uk
💻 www.dysgucymraegdeorllewin.org

Mynediad Plus – Intensive Welsh course

If you have the time to devote and want to learn quickly and become fluent, this is the course for you. The course meets on four mornings a week and you can choose to follow it at Swansea or Carmarthen:

Swansea – Tŷ Tawe, Christina Street

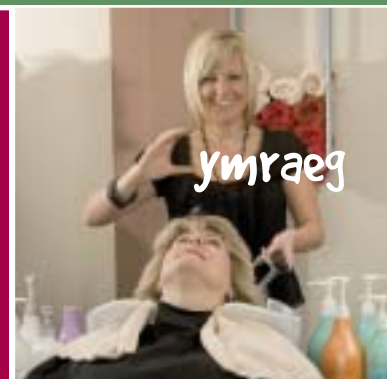
9:30-12:00 Monday, Tuesday, Wednesday, Thursday
First Meeting: 14 September 2009

Carmarthen – Trinity University College

9:30-12:00 Monday, Tuesday, Wednesday, Thursday
First Meeting: 14 September 2009

Contact us for further details and to discuss enrolment on these courses:

☎ 01792 602070
✉ welshforadults@swansea.ac.uk
💻 www.learnwelshsouthwestwales.org



Ffioedd

Mae Canolfan Cymraeg i Oedolion De-Orllewin Cymru wedi cysoni ffioedd cyrsiau Cymraeg i Oedolion ar draws y rhanbarth.

£1.00 yr awr am gyrsiau 2 awr yr wythnos
 £0.75 yr awr am gyrsiau mwy dwys (4 awr yr wythnos neu fwy)
 Mynediad Plus - £0.50 yr awr (£150 am y cwrs)

Bydd cost ychwanegol am ddeunyddiau'r cwrs

Mae consesiynau ar gael (hanner pris). Cysylltwch â'r darparwr am fwy o fanylion am y ffioedd, sut i gofrestru a sut i dalu.

Cymorth gyda chostau

Ni ddylai'r ffi eich rhwystro rhag dysgu Cymraeg.

Mae Cyfrifon Dysgu Unigol Cymru yn cynnig hyd at £200 i rai pobl tuag at ffioedd dysgu. Ffoniwch 0800 100 900 am fanylion. Mae gan Ganolfan Cymraeg i Oedolion De-Orllewin Cymru gronfa fwrsari i helpu pobl sydd am ddysgu Cymraeg ond sy'n cael trafferth i dalu'r ffioedd. Ffoniwch (01792) 602070 am fanylion a ffurflen gais.

Mae Llywodraeth Cynulliad Cymru wedi dyrannu cyllid i roi cymorth ariannol i ddysgwyr y Gymraeg trwy'r Gronfa Ariannol Wrth Gefn. Gall y Gronfa hon roi cymorth i ddysgwyr gyda chostau ychwanegol a delir wrth ddysgu Cymraeg. Gallai hyn fod yn gostau teithio, gofal plant, llyfrau neu weithgareddau dysgu anffurfiol. Cysylltwch â ni ar 01792 602070 neu cymraegioedolion@abertawe.ac.uk am fanylion a ffurflen gais.

Fees

The South West Wales Welsh for Adults Centre has standardised the fees for Welsh for Adults courses across the region.

£1.00 an hour for courses 2 hours a week
 £0.75 an hour for more intensive courses (4 hours a week or more)
 Mynediad Plus - £0.50 an hour (£150 for the course)

There will be an additional charge for course materials.

Concessions are available (half price). Contact the provider for more information on fees, how to register and how to pay.

Help with costs

The fee should not be a barrier to learning Welsh.

Individual Learning Accounts are available to some students and can offer up to £200 towards tuition fees. Phone 0800 100 900 for details. The South West Wales Welsh for Adults Centre has a bursary to help people who wish to learn Welsh but have difficulties paying the fees. Phone (01792) 602070 for details and an application form.

The Welsh Assembly Government has allocated funding to financially assist Welsh learners through the Financial Contingency Fund. This Fund can provide financial help for learners to assist with additional costs incurred when learning Welsh. This could be costs such as travel, Childcare, books or informal learning activities. Please contact us on 01792 602070 or welshforadults@swansea.ac.uk for details and an application form.

Sut i Ddewis Cwrs

Mae dau beth pwysig i'w ystyried wrth edrych ar y dewis o gyrsiau Cymraeg yn eich ardal:

1. Dewis y lefel iawn

Mae pob cwrs nawr yn cael ei enwi yn unol â'r fframwaith dilyniant cenedlaethol ar gyfer Cymraeg i Oedolion sydd â 5 lefel:

Myndiad: Cyrsiau i ddechreuwyr. Pwyslais mawr ar sgwrsio yn Gymraeg – yn cynnwys trafod manylion personol a digwyddiadau yn y gorffennol.

Sylfaen: Ehangu sgiliau siarad – yn cynnwys trafod y teulu, gwaith a diddordebau.

Canolradd: Mae'r pwyslais ar siarad yn parhau, ond cyflwynir ychydig mwy o ysgrifennu, darllen a gwrando. Dylech allu sgwrsio am bethau bob dydd yn weddol ddi-drafferth erbyn diwedd y lefel hon.

Uwch: Byddwch yn dal i ganolbwyntio ar sgiliau llafar, ond yn raddol, byddwch yn dod ar draws radio, teledu a phapurau newydd Cymraeg. Bydd y cyrsiau hyn hefyd yn eich helpu i ysgrifennu Cymraeg at wahanol bwrpasau.

Siawns am Sgwrs: Yn ystod y cwrs, bydd cyfle i drafod agweddau o fywyd diwylliannol, glweidyddol a hanesyddol Cymru. Fel rhan o'r cwrs, bydd cyfle i greu cysylltiadau gyda siaradwyr Cymraeg rhugl a chael cyfle i ymuno â digwyddiadau Cymraeg. Fydd dim gwaith ysgrifennu o gwbl!

Hyfedredd: Cyrsiau gloywi iaith i siaradwyr Cymraeg rhugl (iaith gyntaf neu ail iaith).

How to Choose a Course

Before you look at the courses on offer in your area, there are two important things you should consider:

1. Choose the right level.

All courses are now named in accordance with the national progression framework for Welsh for Adults which consists of 5 levels.

Entry: Courses for beginners. The emphasis is very much on conversational Welsh - discussing personal details and past events are among the topics covered.

Foundation: Expand on your speaking skills. Family, work and hobbies are among the topics covered.

Intermediate: The emphasis is still on speaking, but a little more writing, reading and listening is introduced. You should feel comfortable holding a conversation on everyday topics by the end of this level.

Advanced: You will still concentrate on oral skills, but also be gradually introduced to Welsh radio, television and newspapers. Courses also help you write competently.

Siawns am Sgwrs: During the course, you will have the opportunity to discuss aspects of cultural, political and historical life in Wales. As part of the course, you will have the opportunity to create contacts with fluent Welsh speakers and will have the opportunity to join Welsh events. There will be no written work whatsoever!

Proficiency: Courses for people who speak Welsh fluently (as a first or second language) who wish to improve their command of the language.

2. Pa mor gyflym?

Y ffordd orau i ddysgu iaith yw mynd ati dros eich pen a'ch clustiau, felly y cyrsiau â'r mwyaf o oriau cyswllt yw'r ffordd fwyaf effeithiol o ddysgu i bobl sy'n gallu rhoi digon o amser. Mae dechreuwyr yn gallu dilyn cyrsiau sy'n cwrdd unwaith yr wythnos neu gyrsiau mwy dwys gyda dau ddsbarth yr wythnos (neu 3 yr wythnos o Ionawr – Mehefin). Fel arfer, bydd cyrsiau unwaith yr wythnos yn gwneud un o'r lefelau uchod dros ddwy flynedd (3 blynedd ar lefel Uwch) a bydd y cyrsiau mwy dwys yn gwneud un lefel bob blwyddyn. Mae'r ddau lwybr yn dod at ei gilydd fel arfer wrth symud i fyny'r lefelau.

I bobl sydd am ddysgu'n gyflym dros gyfnod byr, mae'r cwrs Mynediad + sy'n cwrdd 4 bore yr wythnos yn ddewis da (gweler tudalen 6).

Dod o hyd i'r cwrs

Mae'r cyrsiau wedi'u rhestru fesul sir ar y tudalennau nesaf. Mae'r rhestr i'n dangos pa sefydliad partner yw'r darparwr ar gyfer pob cwrs. Ar ôl i chi ddod o hyd i'r cwrs iawn, cysylltwch â'r darparwr i gofrestru. Mae manylion cyswllt pob darparwr ar dudalen 28.

Neu, os ydych chi'n dal i chwilio am gyngor pellach, cysylltwch â ni yn y Ganolfan ar 01792 602 070.

Mae'r rhestr cyrsiau yn y llyfryn hwn yn dangos pa sefydliad partner sy'n darparu pob cwrs:

CA..... Coleg Abertawe
 CCNPT..... Coleg Castell Nedd Port Talbot
 CG..... Coleg Gorseinon
 CPYD..... Coleg Prifysgol y Drindod
 CSG..... Cyngor Sir Gâr
 CSP..... Cyngor Sir Penfro
 PA..... Prifysgol Abertawe

2. Choose the right pace.

The best way to learn a language is to immerse yourself in it, so you should consider going for a course with the most contact hours that you can devote your time to. As a beginner, you have the option of working at a leisurely pace on courses meeting once a week or a more intensive programme with two classes a week (or 3 a week from January – June). Courses meeting once a week usually cover one of the above levels over two years (3 years at Uwch/Advanced) and the more intensive courses cover a level per year. The two paths usually merge as you progress to the higher levels.

If you wish to learn to communicate effectively in a short period of time, then the highly intensive Mynediad Plus course which meets for 4 mornings a week is the course for you (see page 6).

Find the course

The courses are listed on a county by county basis on the following pages. The listings show which of the partner institutions is the provider for each course. When you have found the right course, please contact the relevant provider to enrol. You will find the contact details for each provider on page 28.

Or if you're still looking for further advice, please contact us at the Centre on 01792 602070.

The course listings in this brochure indicate which of the partner institutions delivers each course:

CA..... Swansea College
 CCNPT..... Neath Port Talbot College
 CG..... Gorseinon College
 CPYD..... Trinity University College
 CSG..... Carmarthenshire County Council
 CSP..... Pembrokeshire County Council
 PA..... Swansea University

Côd Code	Enw'r Cwrs Course Name	Ble Where	Dydd Day	Amser Time	Cyfarfod Cyntaf First Meeting	Darparwr Provider
	Mynediad Intensive	Bishopston, Glebe Hall	Mon,Wed	09:30 - 11:30	14/09/2009	PA
	Mynediad Intensive	Clydach, Ysgol Gymraeg Gellionnen	Tues,Thurs	13:00 - 15:00	15/09/2009	PA
	Mynediad Intensive	Killay, Saint Hilary Church Hall	Wed,Fri	12:45 - 14:45	16/09/2009	PA
	Mynediad Intensive	Morrison, Tabernacl Chapel	Tues,Thurs	09:30 - 11:30	15/09/2009	PA
	Mynediad Intensive	Penlan, Ysgol Gyfun Bryntawe	Tues,Thurs	19:00 - 21:00	15/09/2009	PA
	Mynediad Intensive	Pontarddulais, Noddfa Chapel	Tues,Thurs	09:30 - 11:30	15/09/2010	PA
	Mynediad Intensive	Sketty, University Campus	Tues,Thurs	17:30 - 19:30	15/09/2009	PA
	Mynediad Intensive	SA1 Waterfront Church	Mon,Wed	09:30 - 11:30	14/09/2009	PA
	Mynediad Intensive	Swansea, Tŷ Tawe	Sat	09:00 - 13:00	19/09/2009	PA
	Mynediad Intensive	Swansea, Tŷ Tawe	Tues,Thurs	09:30 - 11:30	15/09/2009	PA
	Mynediad Intensive	Swansea, Tŷ Tawe	Fri	09:00 - 13:00	18/09/2009	PA
	Mynediad Intensive	Swansea, Tŷ Tawe	Mon,Tues,Wed,Thurs	09:30 - 12:00	14/09/2009	PA
	Mynediad Intensive	Swansea, TŷTawe	Mon,Wed	19:00 - 21:00	14/09/2009	PA
	Mynediad Intensive	Three Crosses, Community Centre	Mon,Fri	09:30 - 11:30	18/09/2009	PA
	Mynediad Intensive	Wanarwydd, Community Centre	Tues,Thurs	12:45 - 14:45	15/09/2009	PA
	Mynediad Intensive	West Cross, Ysgol Gymraeg Llwynderw	Mon,Wed	19:00 - 21:00	14/09/2009	PA
	Mynediad 1	Gorseinon, Lifelong Learning Centre	Mon	18:30 - 20:30	21/09/2009	CG
	Mynediad 1	Gorseinon, Lifelong Learning Centre	Thurs	19:00 - 21:00	24/09/2009	CG
	Mynediad 1 <small>(Rhiant a Phlentyn)</small>	Manselton, Christwell Church	Mon	11:00 - 12:00	21/09/2009	CA
	Mynediad 1	Morrison, Comprehensive School	Mon	18:30 - 20:30	21/09/2009	CA
	Mynediad 1	Mumbles, Methodist Church	Wed	18:00 - 20:00	23/09/2009	CA
	Mynediad 1	Mumbles, Ostreme Centre	Mon	12:30 - 14:30	21/09/2009	CA
	Mynediad 1	Penlan, South Penlan Comm. Centre	Tues	09:30 - 11:30	22/09/2009	CA
	Mynediad 1	Penllergaer, Llywelyn Hall	Thurs	09:30 - 11:30	17/09/2009	PA
	Mynediad 1	Pontarddulais, Comp.School	Mon	19:00 - 21:00	21/09/2009	CG
	Mynediad 1	Swansea, Metropolitan University	Thurs	14:30 - 16:30	24/09/2009	CA
	Mynediad 1	Swansea, Kingsway Centre	Wed	18:30 - 20:30	23/09/2009	CA
	Mynediad 1	Swansea, Kingsway Centre	Wed	12:30 - 14:30	23/09/2009	CA

Côd Code	Enw'r Cwrs Course Name	Ble Where	Dydd Day	Amser Time	Cyfarfod Cyntaf First Meeting	Darparwr Provider
	Mynediad 1	Three Crosses, Community Centre	Mon	18:00 - 20:00	21/09/2009	CA
	Mynediad 1	Tycoch, College	Tues	18:00 - 20:00	22/09/2009	CA
	Mynediad 1	Tycoch, College	Mon	12:30 - 14:30	21/09/2009	CA
	Mynediad 2	Gorseinon, Lifelong Learning Centre	Wed	09:15 - 11:15	23/09/2009	CG
	Mynediad 2	Gorseinon, College, Belgrave Rd	Wed	19:00 - 21:00	24/09/2009	CG
	Mynediad 2	Llanrhidian, North Gower Hotel	Wed	19:00 - 21:00	23/09/2009	PA
	Mynediad 2	Morrison, Comprehensive School	Wed	18:00 - 20:00	23/09/2009	CA
	Mynediad 2	Morrison, Tabernacle Chapel	Thurs	18:00 - 20:00	24/09/2009	CA
	Mynediad 2	Penclawdd, Community Centre	Mon	09:30 - 11:30	21/09/2009	PA
	Mynediad 2	Swansea, Tŷ Tawe	Wed	09:30 - 11:30	23/09/2009	CA
	Mynediad 2	Tycoch, College	Mon	09:30 - 11:30	21/09/2009	CA
	Mynediad 2	Pontarddulais, Comprehensive School	Mon	17:00 - 19:00	23/09/2009	CG
	Mynediad 2	Tycoch, College	Thurs	18:00 - 20:00	24/09/2009	CA
	Sylfaen Dwys	Abertawe, Tŷ Tawe	Llun, Mercher	09:30 - 11:30	21/09/2009	PA
	Sylfaen Dwys	Abertawe, Tŷ Tawe	Gwener	09:00 - 13:00	25/09/2009	PA
	Sylfaen Dwys	Clydach, Canolfan Forge Fach	Mawrth,Iau	19:00 - 21:00	22/09/2009	PA
	Sylfaen Dwys	Llansamlet, Ysgol Gymraeg Lon Las	Llun, Mercher	19:00 - 21:00	21/09/2009	PA
	Sylfaen Dwys	Sgeti, Campws y Brifysgol	Llun,Mercher	17:30 - 19:30	21/09/2009	PA
	Sylfaen Dwys	Waunarlywydd, Ysgol Y Login Fach	Mawrth,Iau	18:30 - 20:30	22/09/2009	PA
	Sylfaen 1	Abertawe, Canolfan y Kingsway	Mercher	18:00 - 20:00	23/09/2009	CA
	Sylfaen 1	Gorseinon, Canolfan Dysgu Gydol Oes	Gwener	09:15 - 11:15	25/09/2009	CG
	Sylfaen 1	Gorseinon, Canolfan Pontybrenin	Iau	09:00 - 11:00	24/09/2009	CG
	Sylfaen 1	Gorseinon, Coleg, Heol Belgrave	Mawrth	19:00 - 21:00	22/09/2009	CG
	Sylfaen 1	West Cross, Ysgol Gymraeg Llwynderw	Llun	19:00 - 21:00	21/09/2009	PA
	Sylfaen 2	Abertawe, Amgueddfa'r Glannau	Llun	12:30 - 14:30	21/09/2009	CA
	Sylfaen 2	Abertawe, Tŷ Tawe	Mawrth	19:00 - 21:00	22/09/2009	PA
	Sylfaen 2	Bonymaen, Ysgol Gyfun Cefn Hengoed	Mercher	19:00 - 21:00	23/09/2009	CA
	Sylfaen 2	Clydach, Canolfan Forge Fach	Llun	19:00 - 21:00	21/09/2009	PA
	Sylfaen 2	Fforestfach, Neuadd Sant Illtyd, Ystrad Road	Mawrth	09:30 - 11:30	22/09/2009	PA
	Sylfaen 2	Gorseinon, Canolfan Dysgu Gydol Oes	Llun	09:30 - 11:30	21/09/2009	CG

Côd Code	Enw'r Cwrs Course Name	Ble Where	Dydd Day	Amser Time	Cyfarfod Cyntaf First Meeting	Darparwr Provider
	Sylfaen 2	Sgeti, Campws y Brifysgol	Llun	17:30 - 19:30	21/09/2009	PA
	Sylfaen 2	Trefansel, Eglwys Christwell	Mawrth	10:00 - 12:00	22/09/2009	CA
	Sylfaen 2	Wauaralwydd, Ysgol Y Login Fach	Mawrth	18:30 - 20:30	22/09/2009	PA
	Sylfaen 2	Y Mwmbwls, Neuadd Victoria	Iau	09:30 - 11:30	24/09/2009	CA
	Canolradd Dwys	Abertawe, Tŷ Tawe	Mawrth,Iau	09:30 - 11:30	22/09/2009	PA
	Canolradd Dwys	Treforys, Capel Seion Newydd	Llun,Mercher	09:30 - 11:30	21/09/2009	PA
	Canolradd 1	Abertawe, Canolfan Kingsway	Mercher	18:00 - 20:00	22/09/2009	CA
	Canolradd 1	Prifysgol Fetropolitan Abertawe	Iau	12:00 - 14:00	24/09/2009	CA
	Canolradd 1	Gorseinon, Canolfan Dysgu Gydol Oes	Mercher	13:00 - 15:00	23/09/2009	CG
	Canolradd 1	Llandeiloferwallt, Canolfan Gymunedol	Llun	09:00 - 11:00	21/09/2009	CA
	Canolradd 1	Llandeiloferwallt, Neuadd y Glebe	Iau	13:00 - 15:00	24/09/2009	PA
	Canolradd 1	Penllergaer, Neuadd Llywelyn	Llun	09:30 - 11:30	21/09/2009	PA
	Canolradd 2	Abertawe, Tŷ Tawe	Iau	19:00 - 21:00	24/09/2009	PA
	Uwch 1	Abertawe, Tŷ Tawe	Mercher	19:00 - 21:00	23/09/2009	PA
	Uwch 1	Brynhyfryd, Canolfan Montana Park	Llun	10:00 - 12:00	21/09/2009	PA
	Uwch 1	Cilâ, Neuadd Eglwys Sant Hilary	Iau	09:30 - 11:30	24/09/2009	PA
	Uwch 1	Trefansel, Eglwys Christwell	Iau	10:00 - 12:00	21/09/2009	PA
	Uwch 1	Coleg Tycloch	Llun	18:45 - 20:45	24/09/2009	PA
	Uwch 1	Y Crwys, Canolfan Gymunedol	Mercher	09:30 - 11:30	23/09/2009	PA
	Uwch 1	Y Mwmbwls, Neuadd Victoria	Iau	19:00 - 21:00	24/09/2009	PA
	Uwch 3	Abertawe, Tŷ Tawe	Llun	19:00 - 21:00	21/09/2009	PA
	Siawns am Sgwrs	Abertawe, Campws y Prifysgol	Mawrth	09:30 - 11:30	22/09/2009	PA
	Siawns am Sgwrs	Abertawe, Tŷ Tawe	Llun	10:00 - 12:00	21/09/2009	PA
	Siawns am Sgwrs	Abertawe, Tŷ Tawe	Iau	19:00 - 21:00	24/09/2009	PA
	Siawns am Sgwrs	Gellifedw, Canolfan Gymunedol	Iau	10:00 - 12:00	24/09/2009	PA
	Siawns am Sgwrs	Gorseinon, Yr Institiwt	Mercher	09:30 - 11:30	23/09/2009	PA
	Siawns am Sgwrs	Brynhyfryd, Canolfan Montana Park	Iau	09:30 - 11:30	24/09/2009	PA
	Graenus 1	Abertawe, Tŷ Tawe	Llun	19:00 - 21:00	28/09/2009	PA

Castell - nedd Port Talbot | Neath Port Talbot

13

Côd Code	Enw'r Cwrs Course Name	Ble Where	Dydd Day	Amser Time	Cyfarfod Cyntaf First Meeting	Darparwr Provider
	Mynediad Intensive	Cimla, Community Centre	Mon, Fri	09:30 - 11:30	14/09/2009	PA
	Mynediad Intensive	Crynant, Community Centre	Thurs, Fri	09:30 - 11:30	17/09/2009	PA
	Mynediad Intensive	Cwmafon, Community Centre	Thurs, Fri	09:30 - 11:30	18/09/2009	PA
	Mynediad Intensive	Neath, YMCA, Pen-y-Dre	Mon, Wed	19:00 - 21:00	14/09/2009	PA
	Mynediad Intensive	Pontardawe, Welsh Primary School	Wed, Fri	13:00 - 15:00	16/09/2009	PA
	Mynediad Intensive	Port Talbot, Sandfields Comm. Dev. Centre	Mon, Wed	13:00 - 15:00	14/09/2009	PA
	Mynediad Intensive	Port Talbot, YMCA	Tues, Thurs	19:00 - 21:00	15/09/2009	PA
	Mynediad Intensive	Resolven, Ynysfach Primary School	Tues, Thurs	19:00 - 21:00	17/09/2009	PA
	Mynediad Intensive	Rhydyfro, Primary School	Mon, Thurs	18:30 - 20:30	14/09/2009	PA
	Mynediad Intensive	Ystalyfera Development Trust	Tues, Thurs	09:30 - 11:30	15/09/2009	PA
	Mynediad 1	Cymmer, Afan Riverside Centre	Mon	19:00 - 21:00	14/09/2009	CCNPT
	Mynediad 1	Glynneath, Training Centre	Wed	11:00 - 13:00	16/09/2009	CCNPT
	Mynediad 1	Neath, College, Neath Campus	Wed	18:30 - 20:30	16/09/2009	CCNPT
	Mynediad 1	Neath, College, Neath Campus	Mon	19:00 - 21:00	14/09/2009	CCNPT
	Mynediad 1	Neath, Queen St Centre	Tues	09:00 - 11:00	15/09/2009	CCNPT
	Mynediad 1	Neath, Queen St Centre	Thurs	13:00 - 15:00	17/09/2009	CCNPT
	Mynediad 1	Neath, Old Town Hall, Church Place	Mon	09:00 - 11:00	21/09/2009	CCNPT
	Mynediad 1	Pontardawe, College, Tawe Hse	Wed	18:15 - 20:15	16/09/2009	CCNPT
	Mynediad 1	Pontardawe, College, Tawe Hse	Fri	09:30 - 11:30	18/09/2009	CCNPT
	Mynediad 1	Port Talbot, Taibach Community Centre	Fri	10:00 - 12:00	18/09/2009	CCNPT
	Mynediad 1	Tai'r gwaith, Canolfan Maerdy	Tues	09:30 - 11:30	15/09/2009	CCNPT
	Mynediad 2	Briton Ferry, Llansawel House	Thurs	09:30 - 11:30	17/09/2009	CCNPT
	Mynediad 2	Cwmafon, Library	Tues	19:00 - 21:00	15/09/2009	CCNPT
	Mynediad 2	Glynneath, Education Centre	Wed	13:00 - 15:00	16/09/2009	CCNPT
	Mynediad 2	Neath, College, Neath Campus	Wed	16:30 - 18:30	16/09/2009	CCNPT
	Mynediad 2	Neath, College, Neath Campus	Mon	19:00 - 21:00	14/09/2009	CCNPT
	Mynediad 2	Neath, Queen St Centre	Fri	11:30 - 13:30	18/09/2009	CCNPT
	Mynediad 2	Neath, Queen St Centre	Mon	13:00 - 15:00	14/09/2009	CCNPT
	Mynediad 2	Neath, Old Town Hall, Church Place	Tues	09:00 - 11:00	22/09/2009	CCNPT
	Mynediad 2	Pontardawe, College, Tawe Hse	Tues	18:30 - 20:30	15/09/2009	CCNPT

Castell - nedd Port Talbot | Neath Port Talbot

Côd Code	Enw'r Cwrs Course Name	Ble Where	Dydd Day	Amser Time	Cyfarfod Cyntaf First Meeting	Darparwr Provider
■	Mynediad 2	Port Talbot, Taibach Community Centre	Thurs	18:30 - 20:30	17/09/2009	CCNPT
■	Mynediad 2	Resolven, Ynysfach Primary School	Tues	18:30 - 20:30	15/09/2009	CCNPT
■	Mynediad 2	Ystalyfera, Development Trust	Wed	18:30 - 20:30	16/09/2009	CCNPT
■	Sylfaen Dwys	Banwen, Canolfan DOVE	Mawrth, Iau	12:45 - 14:45	22/09/2009	PA
■	Sylfaen Dwys	Castell Nedd, CVS	Llun, Mercher	19:00 - 21:00	21/09/2009	PA
■	Sylfaen Dwys	Llansawel, Ysgol Gymraeg Tyle'r Ynn	Mawrth, Iau	13:15 - 15:15	22/09/2009	PA
■	Sylfaen 1	Bryncoch, Capel Saron	Mawrth	10:00 - 12:00	15/09/2009	CCNPT
■	Sylfaen 1	Castell Nedd, Coleg, Campws Castell Nedd	Llun	16:30 - 18:30	14/09/2009	CCNPT
■	Sylfaen 1	Castell Nedd, Coleg, Campws Castell Nedd	Mercher	19:00 - 21:00	16/09/2009	CCNPT
■	Sylfaen 1	Castell Nedd, Hen Neuadd y Dre	Iau	09:00 - 11:00	24/09/2009	CCNPT
■	Sylfaen 1	Pontardawe, Coleg, Tŷ Tawe	Iau	09:30 - 11:30	17/09/2009	CCNPT
■	Sylfaen 1	Pontardawe, Coleg, Tŷ Tawe	Iau	18:30 - 20:30	17/09/2009	CCNPT
■	Sylfaen 2	Baglan, Llyfrgell	Mawrth	10:00 - 12:00	15/09/2009	CCNPT
■	Sylfaen 2	Baglan, Llyfrgell	Mercher	12:30 - 14:30	16/09/2009	CCNP
■	Sylfaen 2	Castell Nedd, Ysgol Gyfun Llangatwg	Mawrth	19:00 - 21:00	15/09/2009	CCNPT
■	Sylfaen 2	Castell Nedd, Coleg, Campws Castell Nedd	Mawrth	19:00 - 21:00	15/09/2009	CCNPT
■	Sylfaen 2	Castell Nedd, Neuadd Goffa Rhydhir	Llun	13:00 - 15:00	21/09/2009	PA
■	Sylfaen 2	Castell Nedd, Canolfan Stryd y Frenhines	Mercher	09:15 - 11:15	16/09/2009	CCNPT
■	Sylfaen 2	Castell Nedd, Canolfan Stryd y Frenhines	Mawrth	09:30 - 11:30	15/09/2009	CCNPT
■	Sylfaen 2	Castell Nedd, Hen Neuadd y Dre	Mercher	09:00 - 11:00	23/09/2009	CCNPT
■	Sylfaen 2	Castell Nedd, Hen Neuadd y Dre	Gwener	09:00 - 11:00	25/09/2009	CCNPT
■	Sylfaen 2	Cwmafan, Llyfrgell Cwmafan	Iau	19:00 - 21:00	17/09/2009	CCNPT
■	Sylfaen 2	Glynnedd, Canolfan Hyfforddi	Mercher	09:00 - 11:00	16/09/2009	CCNPT
■	Sylfaen 2	Port Talbot, Canolfan Addysg Taibach	Mawrth	10:00 - 12:00	15/09/2009	CCNPT
■	Canolradd Dwys	Castell Nedd, YMCA	Llun, Iau	19:00 - 21:00	21/09/2009	PA
■	Canolradd 1	Castell Nedd, YMCA	Iau	19:00 - 21:00	24/09/2009	PA
■	Canolradd 1	Port Talbot, Neuadd Eglwys Wesley	Mercher	19:00 - 21:00	23/09/2009	PA
■	Canolradd 1	Port Talbot, Canolfan Gymunedol Taibach	Mercher	09:30 - 11:30	23/09/2009	PA
■	Canolradd 2	Castell Nedd, Canolfan Stryd y Frenhines	Gwener	09:15 - 11:15	25/09/2009	PA
■	Canolradd 2	Castell Nedd, Ysgol Gymunedol Llangatwg	Iau	19:00 - 21:00	24/09/2009	PA

Côd Code	Enw'r Cwrs Course Name	Ble Where	Dydd Day	Amser Time	Cyfarfod Cyntaf First Meeting	Darparwr Provider
■	Uwch 3	Llansawel, Canolfan Gymunedol Llansawel	Mercher	09:30 - 11:30	23/09/2009	PA
■	Siawns am Sgwrs	Cwmafan, Canolfan Gymunedol	Llun	19:00 - 21:00	21/09/2009	PA
■	Siawns am Sgwrs	Port Talbot, Canolfan Addysg Taibach	Mawrth	13:00 - 15:00	22/09/2009	PA
■	Siawns am Sgwrs	Pontardawe, Canolfan y Groes	Mercher	18:45 - 20:45	23/09/2009	PA
■	Siawns am Sgwrs	Banwen, DOVE	Iau	09:30 - 11:30	24/09/2009	PA
■	Siawns am Sgwrs	Bryncoch, Ffestri Capel Saron	Iau	13:00 - 15:00	24/09/2009	PA



Côd Code	Enw'r Cwrs Course Name	Ble Where	Dydd Day	Amser Time	Cyfarfod Cyntaf First Meeting	Darparwr Provider
■	Mynediad Intensive	Crymych, Community Learning Centre	Fri	10:00 - 14:30	18/09/2009	PA
■	Mynediad Intensive	Crymych, Community Learning Centre	Wed,Thurs	19:00 - 21:00	16/09/2009	PA
■	Mynediad Intensive	Fishguard, Community Learning Centre	Mon	10:00 - 14:30	14/09/2009	PA
■	Mynediad Intensive	Haverfordwest, Community Learning Centre	Mon,Thurs	10:00 - 12:00	14/09/2009	PA
■	Mynediad Intensive	Haverfordwest, Community Learning Centre	Tues	10:00 - 14:30	15/09/2009	PA
■	Mynediad Intensive	Haverfordwest, Community Learning Centre	Mon,Thurs	19:00 - 21:00	14/09/2009	PA
■	Mynediad Intensive	Milford Haven, Milford Haven School	Tues,Thurs	19:00 - 21:00	15/09/2009	PA
■	Mynediad Intensive	Narberth, Bloomfield Centre	Fri	10:00 - 14:30	18/09/2009	PA
■	Mynediad Intensive	Pembroke, Golden Grove School	Mon,Thurs	19:00 - 21:00	14/09/2009	PA
■	Mynediad Intensive	Pembroke Dock, St John's Community Hall	Tues	10:00 - 14:30	15/09/2009	PA
■	Mynediad Intensive	St Davids, Oriel y Parc	Mon,Thurs	10:00 - 12:00	14/09/2009	PA
■	Mynediad Intensive	Tenby, Community Learning Centre	Thurs	10:00 - 14:30	17/09/2009	PA
■	Mynediad 1	Brynberian, Brynberian Community Centre	Wes	19.00 - 21.00	23/09/2009	CSP
■	Mynediad 1	Cilgerran, Community Learning Centre	Mon	19.00 - 21.00	21/09/2009	CSP
■	Mynediad 1	Crymych, Community Learning Centre	Mon	10.00 - 12.00	21/09/2009	CSP
■	Mynediad 1	Crymych, Community Learning Centre	Wed	13.00 - 15.00	23/09/2009	CSP
■	Mynediad 1	Crymych, Community Learning Centre	Mon	19.00 - 21.00	21/09/2009	CSP
■	Mynediad 1	Efailwen, Caffi Beca, Efailwen	Thurs	09:30 - 11:30	23/09/2009	CSP
■	Mynediad 1	Fishguard, Community Learning Centre	Mon	10.00 - 12.00	21/09/2009	CSP
■	Mynediad 1	Fishguard, Community Learning Centre	Wed	13.00 - 15.00	23/09/2009	CSP
■	Mynediad 1	Fishguard, Community Learning Centre	Thurs	19.00 - 21.00	24/09/2009	CSP
■	Mynediad 1	Haverfordwest, Community Learning Centre	Mon	10.00 - 12.00	21/09/2009	CSP
■	Mynediad 1	Haverfordwest, Community Learning Centre	Tues	13.00 - 15.00	22/09/2009	CSP
■	Mynediad 1	Haverfordwest, Community Learning Centre	Mon	19.00 - 21.00	21/09/2009	CSP
■	Mynediad 1	Haverfordwest, Pembrokeshire College	Tues	16.00 - 17.30	22/09/2009	CSP
■	Mynediad 1	Letterston, Letterston Hall	Fri	10.00 - 12.00	25/09/2009	CSP
■	Mynediad 1	Milford Haven, Milford Youth Club	Wed	10.00 - 12.00	23/09/2009	CSP
■	Mynediad 1	Milford Haven, Secondary School	Thurs	19.00 - 21.00	24/09/2009	CSP
■	Mynediad 1	Narberth, Bloomfield Centre	Tues	10.00 - 12.00	22/09/2009	CSP
■	Mynediad 1	Narberth, Bloomfield Centre	Tues	19.00 - 21.00	22/09/2009	CSP

Côd Code	Enw'r Cwrs Course Name	Ble Where	Dydd Day	Amser Time	Cyfarfod Cyntaf First Meeting	Darparwr Provider
	Mynediad 1	Neyland, Teaching Centre	Mon	18.30 - 20.30	21/09/2009	CSP
	Mynediad 1	Pembroke, Golden Grove Community School	Wed	19.00 - 21.00	23/09/2009	CSP
	Mynediad 1	Pembroke Dock, Community Learning Centre	Tues	13.00 - 15.00	22/09/2009	CSP
	Mynediad 1	Pembroke Dock, Community Learning Centre	Mon	19.00 - 21.00	21/09/2009	CSP
	Mynediad 1 (for the Family)	Saundersfoot, Community School	Thurs	13.00 - 15.00	24/09/2009	CSP
	Mynediad 1	St Davids, Curtis House	Wed	10.00 - 12.00	23/09/2009	CSP
	Mynediad 1	St Davids, Bro Dewi School	Thurs	19.00 - 21.00	24/09/2009	CSP
	Mynediad 1	St Dogmaels, Coach House	Mon	10.00 - 12.00	21/09/2009	CSP
	Mynediad 1	Tenby, Community Learning Centre	Mon	13.00 - 15.00	21/09/2009	CSP
	Mynediad 1	Tenby, Community Learning Centre	Mon	10.00 - 12.00	21/09/2009	CSP
	Mynediad 1	Tenby, Community Learning Centre	Thurs	19.00 - 21.00	24/09/2009	CSP
	Mynediad 2 (for the Family)	Angle, Primary School	Thurs	19.00 - 21.00	24/09/2009	CSP
	Mynediad 2	Cilgerran, Community School	Mon	19.00 - 21.00	21/09/2009	CSP
	Mynediad 2	Crymych, Community Learning Centre	Tues	10.00 - 12.00	22/09/2009	CSP
	Mynediad 2	Crymych, Community Learning Centre	Thurs	19.00 - 21.00	24/09/2009	CSP
	Mynediad 2	Fishguard, Community Learning Centre	Thurs	13.00 - 15.00	24/09/2009	CSP
	Mynediad 2	Fishguard, Community Learning Centre	Wed	19.00 - 21.00	23/09/2009	CSP
	Mynediad 2	Haverfordwest, Community Learning Centre	Mon	13.00 - 15.00	21/09/2009	CSP
	Mynediad 2	Haverfordwest, Community Learning Centre	Mon	19.00 - 21.00	21/09/2009	CSP
	Mynediad 2	Haverfordwest, Community Learning Centre	Thurs	10.00 - 12.00	24/09/2009	CSP
	Mynediad 2	Maenclochog, Community School	Wed	19.00 - 21.00	23/09/2009	CSP
	Mynediad 2	Maenclochog, Community Hall	Wed	10.00 - 12.00	23/09/2009	CSP
	Mynediad 2	Milford Haven, Murray Suite	Thurs	10.00 - 12.00	22/09/2009	CSP
	Mynediad 2	Narberth, Bloomfield Centre	Tues	10.00 - 12.00	22/09/2009	CSP
	Mynediad 2	Narberth, Bloomfield Centre	Mon	19.00 - 21.00	21/09/2009	CSP
	Mynediad 2	Pembroke, Golden Grove Community School	Thurs	19.00 - 21.00	24/09/2009	CSP
	Mynediad 2	Pembroke Dock, Community Learning Centre	Mon	9.30 - 11.30	21/09/2009	CSP
	Mynediad 2	Pembroke Dock, Community Learning Centre	Tues	19.00 - 21.00	22/09/2009	CSP
	Mynediad 2	St Davids, Curtis House	Tues	10.00 - 12.00	22/09/2009	CSP

Sir Benfro | Pembrokeshire

Côd Code	Enw'r Cwrs Course Name	Ble Where	Dydd Day	Amser Time	Cyfarfod Cyntaf First Meeting	Darparwr Provider
■	Mynediad 2	St Dogmaels, St Dogmaels Hall	Wed	10:00 - 12:00	23/09/2009	CSP
■	Mynediad 2 (for the Family)	Stackpole, Primary School	Mon	13:15 - 15:15	21/09/2009	CSP
■	Mynediad 2	Tenby, Community Learning Centre	Tues	10:00 - 12:00	22/09/2009	CSP
■	Mynediad 2	Tenby, Community Learning Centre	Mon	19:00 - 21:00	21/09/2009	CSP
■	Sylfaen Dwys	Crymych, Canolfan Ddysgu Gymunedol	Llun,Gwener	09:30 - 11:30	21/09/2009	PA
■	Sylfaen Dwys	Doc Penfro, Canolfan Ddysgu Gymunedol	Llun	10:00 - 14:30	21/09/2009	PA
■	Sylfaen Dwys	Hwlfordd, Coleg Sir Benfro	Llun,Mercher	19:00 - 21:00	21/09/2009	PA
■	Sylfaen 1	Abergwaun, Canolfan Ddysgu Gymunedol	Mawrth	13:00 - 15:00	22/09/2009	CSP
■	Sylfaen 1	Arberth, Canolfan Bloomfield	Llun	10:30 - 12:30	21/09/2009	CSP
■	Sylfaen 1	Crymych, Canolfan Ddysgu Gymunedol	Mercher	10:00 - 12:00	23/09/2009	CSP
■	Sylfaen 1	Crymych, Canolfan Ddysgu Gymunedol	Mawrth	19:00 - 21:00	22/09/2009	CSP
■	Sylfaen 1	Dinbych y Pysgod, Can. Ddysgu Gymunedol	Mercher	19:00 - 21:00	23/09/2009	CSP
■	Sylfaen 1	Doc Penfro, Canolfan Ddysgu Gymunedol	Llun	19:00 - 21:00	21/09/2009	CSP
■	Sylfaen 1	Hwlfordd, Coleg Penfro	Mercher	16:00 - 17:30	23/09/2009	CSP
■	Sylfaen 1	Llandudoch, Neuadd Llandudoch	Mawrth	10:00 - 12:00	22/09/2009	CSP
■	Sylfaen 1	Penfro, Ysgol Gymunedol Gelli Aur	Llun	19:00 - 21:00	21/09/2009	CSP
■	Sylfaen 1 (i'r Teulu)	Solfach, Ysgol Gymunedol Solfach	Iau	09:30 - 11:30	24/09/2009	CSP
■	Sylfaen 2	Abergwaun, Canolfan Ddysgu Gymunedol	Mawrth	19:00 - 21:00	22/09/2009	CSP
■	Sylfaen 2	Abergwaun, Canolfan Ddysgu Gymunedol	Gwener	10:00 - 12:00	25/09/2009	CSP
■	Sylfaen 2	Crymych, Canolfan Ddysgu Gymunedol	Mawrth	10:00 - 12:00	22/09/2009	CSP
■	Sylfaen 2	Crymych, Canolfan Ddysgu Gymunedol	Mawrth	19:00 - 21:00	22/09/2009	CSP
■	Sylfaen 2	Dinbych y Pysgod, Can. Ddysgu Gymunedol	Llun	10:00 - 12:00	21/09/2009	CSP
■	Sylfaen 2	Dinbych y Pysgod, Can. Ddysgu Gymunedol	Mawrth	19:00 - 21:00	22/09/2009	CSP
■	Sylfaen 2	Dinbych y Pysgod, Can. Ddysgu Gymunedol	Mercher	10:00 - 12:00	23/09/2009	CSP
■	Sylfaen 2	Hwlfordd, Canolfan Ddysgu Gymunedol	Mercher	19:00 - 21:00	23/09/2009	CSP
■	Canolradd Dwys	Arberth, Canolfan Gymunedol Bloomfield	Mawrth	10:00 - 14:30	22/09/2009	PA
■	Canolradd Dwys	Dinbych y Pysgod, Can. Ddysgu Gymunedol	Llun,Mercher	19:00 - 21:00	21/09/2009	PA
■	Canolradd Dwys	Hwlfordd, Canolfan Ddysgu Gymunedol	Mercher	10:00 - 14:30	23/09/2009	PA
■	Canolradd 1	Castell Gwalchmai, Neuadd Bentref	Mercher	18:30 - 20:30	23/09/2009	CSP
■	Canolradd 1	Cilgerran, Ysgol Gymunedol Cilgerran	Iau	19:00 - 21:00	24/09/2009	CSP

Côd Code	Enw'r Cwrs Course Name	Ble Where	Dydd Day	Amser Time	Cyfarfod Cyntaf First Meeting	Darparwr Provider
■	Canolradd 1	Crymych, Canolfan Ddysgu Gymunedol	Iau	11:15 - 13:15	24/09/2009	CSP
■	Canolradd 1	Efailwen, Caffi Beca	Mercher	09:30 - 11:30	23/09/2009	CSP
■	Canolradd 1	Hwlfordd, Canolfan Ddysgu Gymunedol	Mawrth	19:00 - 21:00	22/09/2009	CSP
■	Canolradd 1	Llanrhian, Neuadd Eglwys	Llun	19:00 - 21:00	21/09/2009	CSP
■	Canolradd 1	Penfro, Ysgol Gymunedol Gelli Aur	Mawrth	19:00 - 21:00	22/09/2009	CSP
■	Canolradd 1	Tyddewi, Tŷ Curtis	Llun	13:00 - 15:00	21/09/2009	CSP
■	Canolradd 2	Aberdaugleddau, Ysgol Uwchradd	Mawrth	18:30 - 20:30	22/09/2009	CSP
■	Canolradd 2	Crymych, Canolfan Ddysgu Gymunedol	Mawrth	18:30 - 20:30	22/09/2009	CSP
■	Canolradd 2	Dinbych y Pysgod, Canolfan Ddysgu Gymunedol	Mercher	10:30 - 12:30	23/09/2009	CSP
■	Canolradd 2	Doc Penfro, Ysgol Gymunedol Doc Penfro	Mawrth	13:00 - 15:00	22/09/2009	CSP
■	Canolradd 2	Hwlfordd, Coleg Penfro	Iau	16:00 - 17:30	24/09/2009	CSP
■	Canolradd 2	Penfro, Ysgol Gymunedol Priordy Cil-maen	Llun	16:00 - 18:00	21/09/2009	CSP
■	Canolradd 2	Trefarchog Neuadd Trefarchog	Iau	19:00 - 21:00	24/09/2009	CSP
■	Uwch 1 Dwys	Crymych, Canolfan Ddysgu Gymunedol	Mercher	09:30 - 14:00	23/09/2009	PA
■	Uwch 1 Dwys	Doc Penfro, Canolfan Ddysgu Gymunedol	Iau	10:00 - 14:30	24/09/2009	PA
■	Uwch 1	Hwlfordd, Canolfan Ddysgu Gymunedol	Mawrth	19:00 - 21:00	22/09/2009	PA
■	Uwch 1	Hwlfordd, Canolfan Ddysgu Gymunedol	Mercher	09:30 - 11:30	23/09/2009	PA
■	Uwch 2	Crymych, Canolfan Ddysgu Gymunedol	Mercher	14:30 - 16:30	23/09/2009	PA
■	Uwch 3 Dwys	Arberth, Canolfan Gymunedol Bloomfield	Iau	10:00 - 14:30	24/09/2009	PA
■	Uwch 3 Dwys	Doc Penfro, Canolfan Ddysgu Gymunedol	Iau	10:00 - 14:45	24/09/2009	PA
■	Siawns am Sgwrs	Abergwaun, Canolfan Ddysgu Gymunedol	Mawrth	10:00 - 12:00	22/09/2009	PA
■	Siawns am Sgwrs	Crymych, Canolfan Ddysgu Gymunedol	Llun	10:00 - 12:00	21/09/2009	PA
■	Siawns am Sgwrs	Dinbych y Pysgod, Canolfan Ddysgu Gymunedol	Llun	10:00 - 12:00	21/09/2009	PA
■	Siawns am Sgwrs	Doc Penfro, Neuadd Gymunedol Sant Ioan	Mercher	19:00 - 21:00	23/09/2009	PA
■	Siawns am Sgwrs	Hwlfordd, Canolfan Ddysgu Gymunedol	Gwener	10:00 - 12:00	25/09/2009	PA
■	Siawns am Sgwrs	Tyddewi, Oriol y Parc	Mercher	10:30 - 12:30	23/09/2009	PA
■	Cymraeg Graenus	Crymych, Canolfan Ddysgu Gymunedol	Llun	09:30 - 11:30	28/09/2009	PA
■	Cymraeg Graenus	Hwlfordd, Canolfan Ddysgu Gymunedoli	Iau	13:00 - 15:00	01/10/2009	PA

Côd Code	Enw'r Cwrs Course Name	Ble Where	Dydd Day	Amser Time	Cyfarfod Cyntaf First Meeting	Darparwr Provider
■	Mynediad Intensive	Ammanford 2ACTIV8	Wed,Fri	09:30 - 11:30	16/09/2009	PA
■	Mynediad Intensive	Brynaman, Community Centre	Mon, Wed	09:30 - 11:30	14/09/2009	PA
■	Mynediad Intensive	Carmarthen, Trinity University College	Mon,Tues,Wed,Thurs	09:30 - 12:00	14/09/2009	CPYD
■	Mynediad Intensive	Carmarthen, Trinity University College	Tues, Thurs	10:00 - 12:00	15/09/2009	CPYD
■	Mynediad Intensive	Carmarthen, Trinity University College	Mon, Wed	14:00 - 16:00	14/09/2009	CPYD
■	Mynediad Intensive	Carmarthen, Trinity University College	Mon,Wed	19:00 - 21:00	14/09/2009	CPYD
■	Mynediad Intensive	Cross Hands, Primary School	Tues,Thurs	19:00 - 21:00	15/09/2009	PA
■	Mynediad Intensive	Kidwelly, Gwenllian School	Mon,Wed	19:00 - 21:00	14/09/2009	PA
■	Mynediad Intensive	Llandeilo Civ. Hall (Mon), St Teilo (Thurs)	Mon,Thurs	19:00 - 21:00	14/09/2009	PA
■	Mynediad Intensive	Llandovery, Ysgol Gyfun Pantycelyn	Mon,Tues	19:00 - 21:00	14/09/2009	CPYD
■	Mynediad Intensive	Llandybie, Memorial Hall	Mon,Thurs	13:00 - 15:00	14/09/2009	PA
■	Mynediad Intensive	Llanelli, Leisure Centre	Mon,Wed	10:00 - 12:00	14/09/2009	PA
■	Mynediad Intensive	Llanelli, Stradey School	Tues,Thurs	19:00 - 21:00	15/09/2009	PA
■	Mynediad Intensive	Llanfihangel ar Arth, Neuadd yr Ysgol	Fri	10:00 - 14:30	18/09/2009	CPYD
■	Mynediad Intensive	Llangadog, Community Centre	Mon,Fri	13:00 - 15:00	14/09/2009	CPYD
■	Mynediad Intensive	Llangennech, Junior School	Mon,Wed	19:00 - 21:00	14/09/2009	PA
■	Mynediad Intensive	Llangennech, Community Centre	Tues,Thurs	13:00 - 15:00	15/09/2009	PA
■	Mynediad Intensive	Llansadwrn, The Reading Room	Tues,Thurs	19:00 - 21:00	15/09/2009	CPYD
■	Mynediad Intensive	Newcastle Emlyn, Holy Trinity Church Community Hall	Tues,Thurs	12:00 - 14:00	15/09/2009	CPYD
■	Mynediad Intensive	Newcastle Emlyn, Ysgol Gyfun Emlyn	Mon,Wed	19:00 - 21:00	14/09/2009	CPYD
■	Mynediad Intensive	Pontyates, Welfare Hall	Tues,Thurs	13:00 - 15:00	15/09/2009	PA
■	Mynediad Intensive	Red Roses, Community Centre	Wed,Fri	10:00 - 12:00	16/09/2009	CPYD
■	Mynediad Intensive	St Clears, West Wales Center for Crafts	Tues,Thurs	13:00 - 15:00	15/09/2009	CPYD
■	Mynediad 1	Ammanford, Welsh Medium Primary School	Wed	19:00 - 21:00	23/09/2009	CSG
■	Mynediad 1	Capel Dewi, Village Hall	Mon	13:00 - 15:00	21/09/2009	CSG
■	Mynediad 1	Carmarthen, Businessman's Club	Tues	19:00 - 21:00	22/09/2009	CSG
■	Mynediad 1	Carmarthen, Tŷ Ni Family Centre	Thurs	9:30 - 11:30	24/09/2009	CSG
■	Mynediad 1	Cefneithin, Maesyryfa School	Wed	19:00 - 21:00	23/09/2009	CSG
■	Mynediad 1	Felinfoel, Community Education Centre	Wed	13:00 - 15:00	23/09/2009	CSG
■	Mynediad 1	Felinfoel, Primary School	Thurs	18:00 - 20:00	24/09/2009	CSG

Côd Code	Enw'r Cwrs Course Name	Ble Where	Dydd Day	Amser Time	Cyfarfod Cyntaf First Meeting	Darparwr Provider
	Mynediad 1	Glanaman, Ysgol y Bedol	Wed	18:00 - 20:00	23/09/2009	CSG
	Mynediad 1	Hendygwyn, Hywel Dda Centre	Mon	19:00 - 21:00	21/09/2009	CSG
	Mynediad 1	Login, Whitland, Ffynnonwen Community Hall	Mon	13:00 - 15:00	21/09/2009	CSG
	Mynediad 1	Llandeilo, Community Education Centre	Thurs	09:30 - 11:30	24/09/2009	CSG
	Mynediad 1	Llandeilo, Community Education Centre	Thurs	19:00 - 21:00	24/09/2009	CSG
	Mynediad 1	Llandovery, Rhys Pritchard Hall	Thurs	10:00 - 12:00	24/09/2009	CSG
	Mynediad 1	Llanelli, Coleg Sir Gâr, Graig	Thurs	12:20 - 14:20	24/09/2009	CSG
	Mynediad 1	Llanelli, Coleg Sir Gâr, Graig	Thurs	18:00 - 20:00	24/09/2009	CSG
	Mynediad 1	Llanpumpsaint, Primary School	Tues	19:00 - 21:00	22/09/2009	CSG
	Mynediad 1	Llwynhendy, Community Education Centre	Tues	19:00 - 21:00	21/09/2009	CSG
	Mynediad 1	Pembrey, Community Education Centre	Tues	10:00 - 12:00	22/09/2009	CSG
	Mynediad 1	Pencader, Primary School	Thurs	19:00 - 21:00	24/09/2009	CSG
	Mynediad 1	Pontyberem, Caffi Cyntes	Tues	18:30 - 20:30	22/09/2009	CSG
	Mynediad 1	Porthyrhyd, Village Hall	Wed	14:00 - 16:00	23/09/2009	CSG
	Mynediad 2	Ammanford, Aman Valley Comp School	Tues	19:00 - 21:00	22/09/2009	CSG
	Mynediad 2	Ammanford, Town Library	Thurs	10:00 - 12:00	24/09/2009	CSG
	Mynediad 2	Brynaman, Community Centre	Wed	18:30 - 20:30	23/09/2009	CSG
	Mynediad 2	Carmarthen, Coleg Sir Gâr (Pibwrlwyd)	Fri	13:00 - 15:00	25/09/2009	CSG
	Mynediad 2	Carmarthen, Town Library	Tues	09:30 - 11:30	22/09/2009	CSG
	Mynediad 2	Cilycwm, Primary School	Mon	19:00 - 21:00	21/09/2009	CSG
	Mynediad 2	Cross Hands, Primary School	Fri	12:45 - 14:45	25/09/2009	CSG
	Mynediad 2	Cwmdu, Cwmdu Inn	Wed	10:00 - 12:00	23/09/2009	CSG
	Mynediad 2	Felinfoel, Community Education Centre	Mon	09:30 - 11:30	21/09/2009	CSG
	Mynediad 2	Ffarmers, Brofana Hall	Mon	19:00 - 21:00	21/09/2009	CSG
	Mynediad 2	Llandeilo, Community Education Centre	Mon	10:00 - 12:00	21/09/2009	CSG
	Mynediad 2	Llandeilo, Community Education Centre	Wed	19:00 - 21:00	23/09/2009	CSG
	Mynediad 2	Llandovery, Ysgol Pantycelyn School	Mon	19:00 - 21:00	21/09/2009	CSG
	Mynediad 2	Llanelli, Coleg Sir Gâr (LL)	Thurs	18:00 - 20:00	24/09/2009	CSG
	Mynediad 2	Llangain, Primary School	Mon	19:00 - 21:00	21/09/2009	CSG
	Mynediad 2	Llangydeyrn, The Farmers	Wed	19:00 - 21:00	23/09/2009	CSG

Côd Code	Enw'r Cwrs Course Name	Ble Where	Dydd Day	Amser Time	Cyfarfod Cyntaf First Meeting	Darparwr Provider
■	Mynediad 2	Llanllwni, Llanllwni Village Hall	Wed	19:00 - 21:00	23/09/2009	CSG
■	Mynediad 2	Newcastle Emlyn, Holy Trinity Church Hall	Mon	10:00 - 12:00	21/09/2009	CSG
■	Mynediad 2	Pembrey, Community Education Centre	Thurs	19:00 - 21:00	24/09/2009	CSG
■	Mynediad 2	Peniel, Primary School	Tues	19:00 - 21:00	22/09/2009	CSG
■	Mynediad 2	Trelech, Ysgol Hafodwennog	Tues	19:00 - 21:00	22/09/2009	CSG
■	Mynediad 2	Whitland, Hywel Dda Centre	Mon	10:00 - 12:00	21/09/2009	CSG
■ ■	Mynediad2/Sylfaen1	Caerfyrddin, Ysgol QE Cambria	Iau	19:00 - 21:00	24/09/2009	CSG
■ ■	Mynediad2/Sylfaen1	Llanelli, Coleg Sir Gâr (Graig)	Iau	18:00 - 20:00	24/09/2009	CSG
■	Sylfaen Dwys	Brechfa, Ysgol Gynradd Brechfa	Mawrth,Iau	13:30 - 15:30	22/09/2009	CPYD
■	Sylfaen Dwys	Caerfyrddin, Coleg Prifysgol y Drindod	Llun,Mercher	09:30 - 11:30	22/09/2009	CPYD
■	Sylfaen Dwys	Caerfyrddin, Coleg Prifysgol y Drindod	Mawrth,Iau	19:00 - 21:00	22/09/2009	CPYD
■	Sylfaen Dwys	Castellnewydd Emlyn, Ysgol Gyfun Emlyn	Llun,Mercher	19:00 - 21:00	21/09/2009	CPYD
■	Sylfaen Dwys	Cydweli, Canolfan Dywysoges Gwenllian	Mawrth,Gwener	09:30 - 11:30	22/09/2009	PA
■	Sylfaen Dwys	Llanelli, Canolfan MCG, Llynnoedd Delta	Llun,Mercher	09:30 - 11:30	21/09/2009	PA
■	Sylfaen Dwys	Llanelli, Ysgol y Strade	Mawrth,Iau	19:00 - 21:00	22/09/2009	PA
■	Sylfaen Dwys	Llanfihangel ar Arth, Neuadd yr Ysgol	Mercher	10:00 - 14:30	23/09/2009	CPYD
■	Sylfaen Dwys	Llangadog, Canolfan Gymdeithasol	Mawrth,Iau	13:30 - 15:30	22/09/2009	CPYD
■	Sylfaen Dwys	Llanmiloe, Community Resource Centre	Gwener	10:00 - 14:30	25/09/2009	CPYD
■	Sylfaen Dwys	Pontyberem, Menter Cwm Gwendraeth	Llun,Iau	09:30 - 11:30	21/09/2009	PA
■	Sylfaen Dwys	Rhydaman, Ysgol Gymraeg	Llun,Mercher	19:00 - 21:00	21/09/2009	PA
■	Sylfaen 1	Caerfyrddin, Llyfrgell y Dre	Llun	09:30 - 11:30	21/09/2009	CSG
■	Sylfaen 1	Castellnewydd, Emlyn, Ysgol y Ddwylan	Mawrth	19:00 - 21:00	22/09/2009	CSG
■	Sylfaen 1	Hendygwyn ar Daf, Neuadd Gymdeithasol Ffynnonwen	Mawrth	19:00 - 21:00	22/09/2009	CSG
■	Sylfaen 1	Llanelli, Coleg Sir Gar (Graig)	Iau	18:00 - 20:00	24/09/2009	CSG
■	Sylfaen 1	Llandeilo, Canolfan Addysg Gymunedol	Mercher	09:30 - 11:30	23/09/2009	CSG
■	Sylfaen 1	Llandeilo, Canolfan Addysg Gymunedol	Mercher	11:45 - 13:45	23/09/2009	CSG
■	Sylfaen 1	Llansawel, Neuadd y Pentre	Llun	19:00 - 21:00	21/09/2009	CSG
■	Sylfaen 1	Llanwinio, Neuadd y Pentre	Mercher	19:30 - 21:30	23/09/2009	CSG
■	Sylfaen 1	Pen-bre, Canolfan Addysg Gymunedol	Gwener	09:30 - 11:30	25/09/2009	CSG
■	Sylfaen 1	Pontyberem, Caffi Cynnes	Iau	18:30 - 20:30	24/09/2009	CSG

Côd Code	Enw'r Cwrs Course Name	Ble Where	Dydd Day	Amser Time	Cyfarfod Cyntaf First Meeting	Darparwr Provider
	Sylfaen 1	Porth Tywyn, Ysgol Glanymor	Mercher	18:00 - 20:00	23/09/2009	CSG
	Sylfaen 1	Porthyrhyd, Neuadd y Pentre	Mawrth	16:30 - 18:30	22/09/2009	CSG
	Sylfaen 1	Rhydaman, Ysgol Dyffryn Aman	Mawrth	19:00 - 21:00	22/09/2009	CSG
	Sylfaen 1	Sanclêr, Ysgol Griffith Jones	Mercher	09:15 - 11:15	23/09/2009	CSG
	Sylfaen 2	Caerfyrddin, Amgueddfa Abergwili	Gwener	09:30 - 11:30	25/09/2009	CSG
	Sylfaen 2	Caerfyrddin, Amgueddfa Abergwili	Gwener	11:45 - 13:45	25/09/2009	CS
	Sylfaen 2	Caerfyrddin, Coleg Sir Gâr (Pibwrlwyd)	Iau	09:30 - 11:30	24/09/2009	CSG
	Sylfaen 2	Cefneithin, Ysgol Maes yr Yrfa	Mercher	19:00 - 21:00	23/09/2009	CSG
	Sylfaen 2	Felinfoel, Canolfan Addysg Gymunedol	Gwener	10:00 - 12:00	25/09/2009	CSG
	Sylfaen 2	Llanelli, Coleg Sir Gâr (Graig)	Iau	18:00 - 20:00	24/09/2009	CSG
	Sylfaen 2	Llandeilo, Canolfan Addysg Gymunedol	Llun	19:00 - 21:00	21/09/2009	CSG
	Sylfaen 2	Peniel, Ysgol Gynradd	Mercher	19:00 - 21:00	23/09/2009	CSG
	Sylfaen 2	Sanclêr, Ysgol Griffith Jones	Mawrth	19:00 - 21:00	22/09/2009	CSG
	Canolradd Dwys	Caerfyrddin, Coleg Prifysgol y Drindod	Mercher,Gwener	09:30 - 11:30	23/09/2009	CPYD
	Canolradd Dwys	Caerfyrddin, Coleg Prifysgol y Drindod	Llun,Mercher	19:00 - 21:00	21/09/2009	CPYD
	Canolradd Dwys	Llanelli, Ysgol y Strade	Mawrth,Iau	19:00 - 21:00	22/09/2009	PA
	Canolradd Dwys	Llanfihangel ar Arth, Neuadd yr Ysgol	Mawrth	10:00 - 14:30	22/09/2009	CPYD
	Canolradd 1	Brynaman, Canolfan Gymunedol	Mercher	12:15 - 14:15	23/09/2009	PA
	Canolradd 1	Caerfyrddin, Amgueddfa Abergwili	Iau	09:30 - 11:30	24/09/2009	CSG
	Canolradd 1	Cefneithin, Ysgol Maes yr Yrfa	Mercher	19:00 - 21:00	23/09/2009	CSG
	Canolradd 1	Cross Hands, Ysgol Gynradd	Mawrth	19:00 - 21:00	22/09/2009	PA
	Canolradd 1	Felinfoel, Canolfan Addysg Gymunedol	Llun	18:30 - 20:30	21/09/2009	CSG
	Canolradd 1	Felinfoel, Canolfan Addysg Gymunedol	Mawrth	10:00 - 12:00	22/09/2009	CSG
	Canolradd 1	Hendygywn ar Daf, Canolfan Hywel Dda	Mercher	19:00 - 21:00	23/09/2009	CSG
	Canolradd 1	Llandeusant, Canolfan Gymunedol	Mercher	19:00 - 21:00	23/09/2009	CSG
	Canolradd 1	Llandeilo,Canolfan Addysg Gymunedol	Llun	10:00 - 12:00	21/09/2009	CSG
	Canolradd 1	Llanelli, Canolfan MCG, Llynnoedd Delta	Mawrth	09:30 - 11:30	22/09/2009	PA
	Canolradd 1	Llanelli, Ysgol y Strade	Iau	19:00 - 21:00	24/09/2009	PA
	Canolradd 1	Llangennech, Ysgol Iau	Mercher	19:00 - 21:00	23/09/2009	PA
	Canolradd 1	Llangynnwr, Ysgol Gynradd	Llun	19:00 - 21:00	21/09/2009	CSG

Côd Code	Enw'r Cwrs Course Name	Ble Where	Dydd Day	Amser Time	Cyfarfod Cyntaf First Meeting	Darparwr Provider
■	Canolradd 1	Llanwinio, Neuadd y Pentre	Mawrth	19:30 - 21:30	22/09/2009	CSG
■	Canolradd 1	Llanymddyfri, Ysgol Pantycelyn	Mawrth	19:00 - 21:00	22/09/2009	CSG
■	Canolradd 1	Pen-bre, Canolfan Addysg Gymunedol	Iau	09:30 - 11:30	24/09/2009	CSG
■	Canolradd 1	Rhydaman, Llyfngell y Dre	Mawrth	10:00 - 12:00	22/09/2009	CSG
■	Canolradd 2	Llanboidy, Ysgol Bro Brynach	Mercher	10:00 - 12:00	23/09/2009	CSG
■	Canolradd 2	Pen-bre, Canolfan Addysg Gymunedol	Llun	13:00 - 15:00	21/09/2009	CSG
■	Uwch Dwys	Caerfyrddin, Coleg Prifysgol y Drindod	Llun,Iau	09:00 - 11:00	21/09/2009	CPYD
■	Uwch Dwys	Caerfyrddin, Coleg Prifysgol y Drindod	Mawrth,Iau	18:30 - 20:30	22/09/2009	CPYD
■	Uwch 1	Bethlehem, Hen Ysgol	Iau	19:00 - 21:00	24/09/2009	CPYD
■	Uwch 1	Caerfyrddin, Coleg Prifysgol y Drindod	Iau	09:30 - 11:30	24/09/2009	CPYD
■	Uwch 1	Caerfyrddin, Clwb Busnes	Mawrth	19:00 - 21:00	22/09/2009	CPYD
■	Uwch 1	Felinfoel, Canolfan Addysg Gymunedol	Llun	09:30 - 11:30	21/09/2009	PA
■	Uwch 1	Llandeilo, Canolfan Addysg Gymunedol	Iau	09:30 - 11:30	24/09/2009	PA
■	Uwch 1	Llanelli, Canolfan Glwyptir Cymru, Penclacwydd	Iau	10:00 - 12:00	24/09/2009	PA
■	Uwch 1	Llanelli, Ysgol y Strade	Iau	19:00 - 21:00	24/09/2009	PA
■	Uwch 1	Rhydaman, Llyfngell	Llun	10:00 - 12:00	21/09/2009	PA
■	Uwch 2	Caerfyrddin, Coleg Prifysgol y Drindod	Mawrth	09:30 - 11:30	22/09/2009	CPYD
■	Uwch 2	Caerfyrddin, Coleg Prifysgol y Drindod	Llun	17:00 - 19:00	21/09/2009	CPYD
■	Uwch 2	Llandeilo, Canolfan Addysg Gymunedol	Llun	13:00 - 15:00	21/09/2009	PA
■	Uwch 2	Llanymddyfri, Ysgol Gyfun Pantycelyn	Llun	19:00 - 21:00	21/09/2009	CPYD
■	Graenus 1	Llandeilo, Canolfan Addysg Gymunedol	Mawrth	13:00 - 15:00	29/09/2009	PA
■	Graenus 1	Rhydaman, Llyfngell	Gwener	10:00 - 12:00	02/10/2009	PA
■	Graenus 1	Llanelli, MCG, Llynnoedd Delta	Mercher	19:00 - 21:00	30/09/2009	PA
■	Graenus 2	Llandeilo, Canolfan Addysg Gymunedol	Mawrth	10:00 - 12:00	29/09/2009	PA
■	Graenus 2	Pontyberem, Swyddfa Menter Cwm Gwendraeth	Llun	18:30 - 20:30	28/09/2009	PA
■	Hyfedredd Cyflwyno	Caerfyrddin, Coleg Prifysgol y Drindod	Gwener	10:00 - 12:00	09/10/2009	CPYD
■	Hyfedredd <small>Crynhoi a Gwerthuso</small>	Caerfyrddin, Coleg Prifysgol y Drindod	Mawrth	13:00 - 15:00	13/10/2009	CPYD
■	Hyfedredd <small>Cyfieithu a Thrawsiethu</small>	Caerfyrddin, Coleg Prifysgol y Drindod	Mercher	10:00 - 12:00	14/10/2009	CPYD
■	Hyfedredd <small>Ysgrifennu Graenus</small>	Caerfyrddin, Coleg Prifysgol y Drindod	Mawrth	10:00 - 12:00	13/10/2009	CPYD
■	Hyfedredd <small>Ysgrifennu Graenus</small>	Caerfyrddin, Coleg Prifysgol y Drindod	Mercher	18:00 - 20:00	14/10/2009	CPYD

Côd Code	Enw'r Cwrs Course Name	Ble Where	Dydd Day	Amser Time	Cyfarfod Cyntaf First Meeting	Darparwr Provider
■	Hyfedredd Prosiect	Caerfyrddin, Coleg Prifysgol y Drindod	Mercher	13:00 - 15:00	14/10/2009	CPYD
■	Siawns am Sgwrs	Llanelli, MCG, Llynnoedd Delta	Gwener	09:30 - 11:30	25/09/2009	PA
■	Siawns am Sgwrs	Llandeilo, Canolfan Addysg Gymunedol	Gwener	10:00 - 12:00	25/09/2009	PA
■	Siawns am Sgwrs	Caerfyrddin, Coleg Prifysgol y Drindod	Iau	12:30 - 14:30	24/09/2009	CPYD



Sadyrnau Siarad

Lefel Level	Enw'r Cwrs Course Name	Ble Where	Dydd Day	Amser Time	Cyfarfod Cyntaf First Meeting	Darparwr Provider
Pob lefel	Sadwrn Siarad	Abertawe, Campws y Brifysgol	Sadwrn	09:30 - 15:30	05/12/2009	PA
Pob lefel	Sadwrn Siarad	Abertawe, Canolfan Kingsway	Sadwrn	09:30 - 15:30	20/03/2010	CA
Pob lefel	Sadwrn Siarad	Abertawe, Canolfan Kingsway	Sadwrn	09:30 - 15:30	20/03/2010	CA
Pob lefel	Sadwrn Siarad	Gorseinon, Canolfan Dysgu Gydol Oes	Sadwrn	09:30 - 15:00	22/05/2010	CG
Pob lefel	Sadwrn Siarad	Llanelli, Ysgol y Strade	Sadwrn	09:30 - 15:30	30/01/2010	PA
Pob lefel	Sadwrn Siarad	Castell Nedd, Coleg CNPT	Sadwrn	09:30 - 15:30	27/02/2010	CCNPT
Pob lefel	Sadwrn Siarad	Llansawel, Ysgol Gyfun Cwrt Sart	Sadwrn	09:30 - 15:30	27/02/2010	PA
Pob lefel	Sadwrn Siarad	Llandeilo, Canolfan Addysg Gymunedol	Sadwrn	09:30 - 15:30	17/10/2009	CSG
Pob lefel	Sadwrn Siarad	Llandeio, Canolfan Addysg Gymunedol	Sadwrn	09:30 - 15:30	27/02/2010	CSG
Pob lefel	Sadwrn Siarad	Llanarthne, Gardd Fotaneg	Sadwrn	09:30 - 15:00	26/06/2010	CSG
Pob lefel	Sadwrn Siarad	Caerfyrddin, Coleg Prifysgol y Drindod	Sadwrn	10:00 - 15:30	14/11/2009	CPYD
Pob lefel	Sadwrn Siarad	Caerfyrddin, Coleg Prifysgol y Drindod	Sadwrn	10:00 - 15:30	16/01/2010	CPYD
Pob lefel	Sadwrn Siarad	Caerfyrddin, Coleg Prifysgol y Drindod	Sadwrn	10:00 - 15:30	05/06/2010	CPYD
Mynediad, Sylfaen, Canolradd	Sadwrn Siarad	Crymch, Canolfan Ddysgu Gymunedol	Sadwrn	09:30 - 15:30	07/11/2009	CSP
Mynediad, Sylfaen, Canolradd	Sadwrn Siarad	Doc Penfro, Canolfan Ddysgu Gymunedol	Sadwrn	09:30 - 15:30	05/12/2009	CSP
Mynediad, Sylfaen, Canolradd	Sadwrn Siarad	Hwlfordd, Canolfan Ddysgu Gymunedol	Sadwrn	09:30 - 15:30	27/02/2010	CSP
Mynediad, Sylfaen, Canolradd	Sadwrn Siarad	Arberth, Canolfan Bloomfiled	Sadwrn	09:30 - 15:30	27/03/2010	CSP
Mynediad, Sylfaen, Canolradd	Sadwrn Siarad	Abergwaun, Canolfan Ddysgu Gymunedol	Sadwrn	09:30 - 15:30	24/04/2010	CSP
Mynediad, Sylfaen, Canolradd	Sadwrn Siarad	Crymch, Canolfan Ddysgu Gymunedol	Sadwrn	09:30 - 15:30	22/05/2010	CSP

Erail

Lefel Level	Enw'r Cwrs Course Name	Ble Where	Dydd Day	Amser Time	Cyfarfod Cyntaf First Meeting	Darparwr Provider
Mynediad	Sadwrn Arholiad Mynediad	Swansea, call 01792 602070	Saturday	09:30 - 04:30	15/05/2010	PA
Mynediad	Sadwrn Arholiad Mynediad	Haverfordwest, Comm. Education Centre	Saturday	09:30 - 16:30	08/05/2010	PA
Mynediad	Sadwrn Arholiad Mynediad	Llandeilo, Community Education Centre	Saturday	09:30 - 04:30	23/01/2010	CSG
Mynediad	Sadwrn Arholiad Mynediad	Llandeilo, Community Education Centre	Saturday	09:30 - 16:30	05/06/2010	CSG

Lefel Level	Enw'r Cwrs Course Name	Ble Where	Dydd Day	Amser Time	Cyfarfod Cyntaf First Meeting	Darparwr Provider
Mynediad	Sadwrn Arholiad Mynediad Ionawr	Carmarthen, Trinity University College	Sat	10:00 - 15:30	16/01/2010	CPYD
Mynediad 2	Cwrs Carlam	Haverfordwest, Comm. Education Centre	Mon-Fri	09:30 - 14:00	02/08/2010	PA
Mynediad 2	Cwrs Carlam	Carmarthen, Trinity University College	Mon-Fri	10:00 - 14:30	28/06/2010	CPYD
Mynediad,Sylfaen, Canolradd	Cwrs penwythnos	Dinbych y Pysgod, Can. Ddysgu Gymunedol	Gwener, Sul	10:00 - 15:00	22/01/2010	CSP
Sylfaen	Sadwrn Sylfaen	Abertawe, ffoniwch 01792 602070	Sadwrn	09:30 - 04:30	22/05/2010	PA
Sylfaen	Sadwrn Sylfaen	Hwlfordd, Canolfan Ddysgu Gymunedol	Sadwrn	09:30 - 16:30	08/05/2010	PA
Sylfaen	Sadwrn Sylfaen	Llandeilo, Canolfan Addysg Gymunedol	Sadwrn	09:30 - 04:30	12/06/2010	CSG
Sylfaen 2	Cwrs Carlam	Hwlfordd, Canolfan Ddysgu Gymunedol	Llun-Gwener	09:30 - 14:00	02/08/2010	PA
Sylfaen 2	Cwrs Carlam	Caerfyrddin, Coleg Prifysgol y Drindod	Llun-Gwener	10:00 - 14:30	28/06/2010	CPYD
Canolradd	Sadwrn Canolradd	Abertawe, ffoniwch 01792 602070	Sadwrn	09:30 - 04:30	08/05/2010	PA
Canolradd	Sadwrn Canolradd	Hwlfordd, Canolfan Ddysgu Gymunedol	Sadwrn	09:30 - 16:30	08/05/2010	PA
Canolradd	Cwrs 5 wythnos - paratoi ar gyfer arholiad Canolradd	i'w gadarnhau - yn ôl y galw	i'w gadarnahu Ebrill-Mehefin 2010			PA
Canolradd ac Uwch	Cwrs Teithiol i Nant Gwrtheyrn	Nant, Gwrtheyrn	Mercher,Gwener	Ffoniwch (01792) 642294	26/05/2010	PA
Pob Lefel	Cwrs Pasg	Abertawe, Campws y Brifysgol	Mon,Fri	09:30 - 15:30	14/04/2010	PA
Pob Lefel	Cwrs Pasg	Hwlfordd, Coleg Sir Benfro	Mercher	09:30 - 15:30	07/04/2010	PA
Pob lefel	Cwrs Haf	Abertawe, Campws y Brifysgol	Llun, Gwener	09:30 - 15:30	05/07/2010	PA
Pob Lefel	Cwrs Haf	Hwlfordd, Coleg Sir Benfro	Llun, Gwener	09:30- 15:30	12/07/2010	PA
Pob lefel	Paratoi ar gyfer Mynediad, Sylfaen, Canolradd Uwch	Caerfyrddin, Coleg Prifysgol y Drindod	Sadwrn	10:00 - 15:30	05/06/2010	CPYD
Pob lefel	Cwrs y Fferi	Glanyfferi, Canolfan Breswyl	Mawrth,Gwener		01/09/2009	CSG
Pob lefel	Cwrs Pasg	Caerfyrddin, Coleg Prifysgol y Drindod	Mercher, Gwener	10:00 - 15:30	14/04/2010	CPYD
Pob lefel	Cwrs Haf	Caerfyrddin, Coleg Prifysgol y Drindod	Llun, Gwener	10:00 - 15:15	21/06/2010	CPYD

Cysylltiadau. Sut i gysylltu â ni Contacts. How to contact us



Coleg Abertawe / Swansea College

Llinos Davies, Coleg Abertawe, Heol Tŷcoch, Tŷcoch, Abertawe SA2 9EB
(01792) 284301 ll.davies@swancoll.ac.uk



Swansea University
Prifysgol Abertawe

Prifysgol Abertawe / Swansea University

Caryl Clement, Prifysgol Abertawe, Adeilad Glyndŵr, Parc Singleton, Abertawe SA2 8PP
(01792) 295766 j.c.clement@abertawe.ac.uk



Coleg Castell-nedd Port Talbot / Neath Port Talbot College

Alison Jones, Coleg Castell-nedd Port Talbot, Heol Dŵr y Felin, Castell-nedd SA10 7RF
(01639) 648058 alison.jones@nptc.ac.uk



Coleg Prifysgol y Drindod / Trinity University College

Heulwen Jones, Ysgol y Gymraeg, Coleg y Drindod, Caerfyrddin SA31 3EP
(01267) 676689 h.jones@drindod.ac.uk
Andrew Currie, (01267) 676846 a.currie@drindod.ac.uk



Coleg Gorseion / Gorseion College

Mari Jones, Coleg Gorseion, 26 Heol Alexandra, Gorseion, Abertawe SA4 4NN
(01792) 893054 mari.jones@gorseion.ac.uk



Cyngor Sir Gâr / Carmarthenshire College

Siân Merlys, Canolfan Addysg Gymunedol Llandeilo, Stryd Rhosmaen, Llandeilo SA19 6LU
(01558) 822729 smerlys@sirgar.gov.uk



Cyngor Sir Penfro / Pembrokeshire Council

Kevin Davies, Canolfan Addysg Gymunedol y Preseli, Ysgol y Preseli, Crymych, Sir Benfro SA41 3QH
(01239) 831455 kevin.davies@pembrokeshire.gov.uk

Ar ôl dewis eich cwrs, cysylltwch â'r trefnydd am fanylion pellach ac i gofrestru.

Once you have chosen a course, contact the organiser for further details and to register.

Nodiadau Notes

Nodiadau Notes



Canolfan Cymraeg i Oedolion De-Orllewin Cymru

Adran Addysg Barhaus Oedolion
Prifysgol Abertawe
Adeilad Glyndŵr
Parc Singleton
Abertawe
SA2 8PP



(01792) 60 20 70



cymraegioedolion@abertawe.ac.uk



www.dysgucymraegdeorllewin.org

South-west Wales Welsh for Adults Centre

Department of Adult Continuing Education
Swansea University
Glyndŵr Building
Singleton Park
Swansea
SA2 8PP



(01792) 60 20 70



welshforadults@swansea.ac.uk



www.learnwelshsouthwestwales.org